



Classic Color Documentation.

Datsun

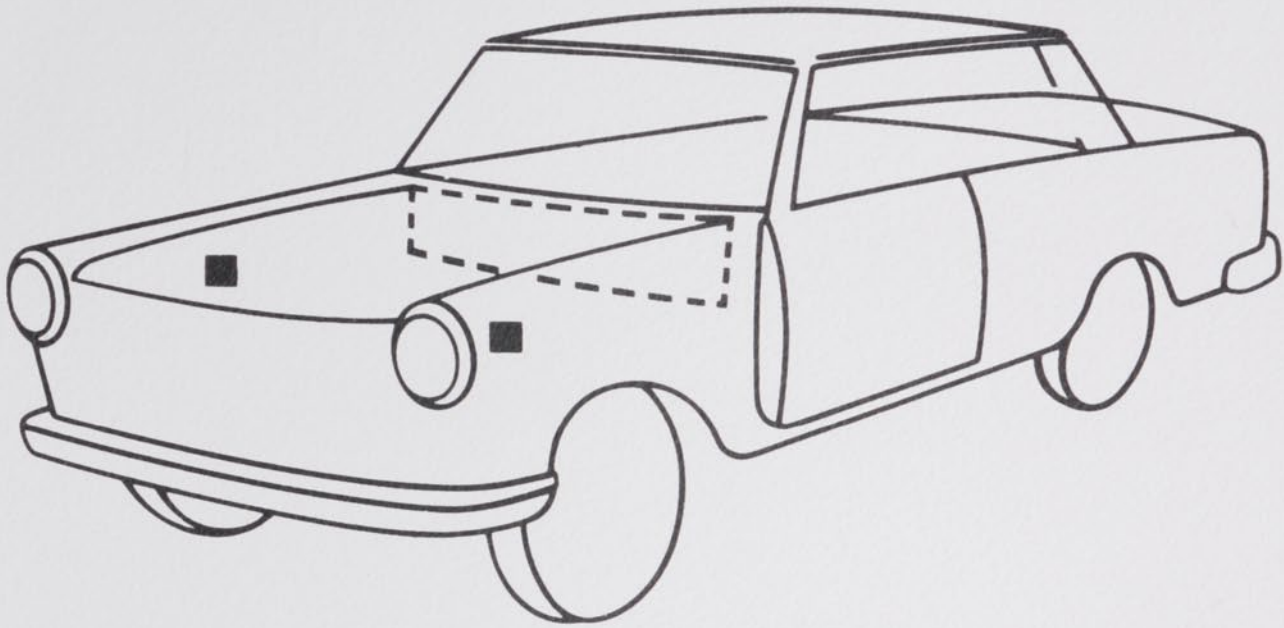


CLASSIC

COLOR PARTNER

Datsun

Werksfarbtonangabe



D A T S U N - Codeliste

1 Code-Nummer - verschiedene Farben !

*003 dark blue-met. 1982	*159 gold-met. 1973
003 green 1972	159 = 102 + 101
006 orange 1972	161 dark grey-met. 1979
*006 silver-met. 1982	161 = 106 + 109
*021 dark green-met. 1982	164 yellow 1983
021 green 1973	164 = 931 + 028
*027 orange-met. 1976	170 yellow 1973
*027 dark grey-met. 1981	170 = 805 + 720
*082 grey-met.	191 = 663 + 027
082 = 034 + ...	191 = 663 + 720
*102 brown-met. 1982	*201 grape-met. 1979
102 yellow 1973	201 = 011 + 028
104 beige 1973	*215 brownish grey-met. 1984
*104 light green-met. 1982	*215 olive-met. 1983
113 blue-met. 1971	218 beige 1979
113 green-met. 1971	*218 brownish grey-met. 1983
121 blue 1982	219 blue green 1974
121 turquoise-met. 1972	*219 red-met. 1984
129 light blue-met. 1972	*224 orange-met. 1983
129 orange 1982	224 yellow 1973
130 beige 1982	*225 reddish beige-met. 1983
130 silver-met.	225 turquoise 1974
138 blue-met.	226 blue 1973
138 = 006 + 011	*226 yellowish beige-met. 1983
*154 dark green-met. 1974	242 beige-met. 1968
154 = 028 + 006	*242 light green-met. 1969
156 light grey-met. 1979	*242 verde aqua-met. 1983
156 = 028 + 109	254 mustard
157 blue-met. 1973	254 = 232 + 006
157 = 003 + 028	264 = 015 + 101
157 = 109 + 028	264 = 032 + 931

HERBERTS GmbH, Postfach 20 02 44, D-5600 Wuppertal 2
RAM 85/2

*265 blue-met. 1973 265 = 015 + 101	964 light yellow 1971 964 = 810 + 842
*267 brown-met. 1973 267 = 218 + 210	966 grey 1971 966 = 815 + 809
*274 brown-met. 274 = 826 + 028	967 red 1972 967 = 842 + 928
278 = 002 + 011 278 = 006 + 715	968 blue 1971 968 = 809 + 815
518 dark blue 1977 518 grey 1968	970 blue-met. 1972 970 = 805 + 661
*619 silver-met. 1979 619 yellow 1968	977 = 928 + 842 977 = 929 + 842 + 928
630 beige 1979 630 green 1968	984 white 1973 984 = 658 + 811
804 yellow 1980 804 green-met. 1971	998 = 924 + 006 998 = 924 + 663
805 nissan white 1979 805 dark grey 1979	
*806 blue-met. 1980 806 orange 1980	
*817 brown-met. 1980 817 yellow 1969 817 = 433 + 217	
818 green 1968 *818 green-met. 1980	
885 = 663 + 505 885 = 663 + 638 885 = 663 + 826	
930 green 1970 *930 red-met. 1980	
931 brown 1971 *931 dark red-met. 1981	
932 red 1972 *932 silver blue-met. 1981	

* - Metallic-Basislack

+ 209 greenish silver (1984)



+ 231 blue (1983)



+ 246 gold (1984)



+ 247 dark grey (1984)



+ 248 silver (1984)



+ 347 greenish grey (1984)



+ Zweischicht-Metallic-Lackierung

+ 330 pink (1984)



+ 332 brownish dark olive (1984)



+ 340 greenish grey (1984)



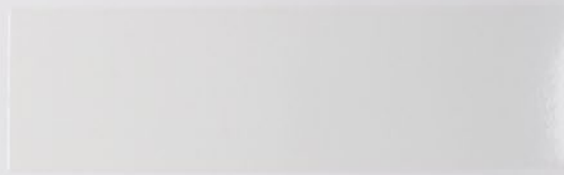
+ 448 dark blue (1986)



040 dark blue (1985)



326 white (1985)



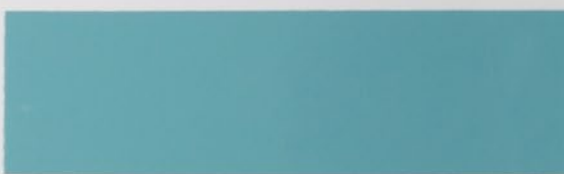
335 blue (1984)



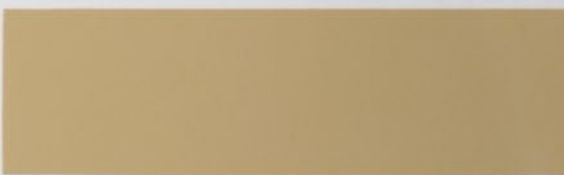
424 dark blue (1985)



450 turquoise (1985)



451 beige (1985)



+ Zweischicht-Metallic-Lackierung

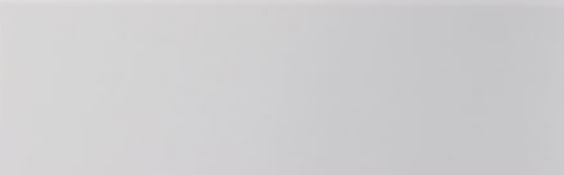
465 bahia red (1986)



472 dark green (1985)



531 white (1986)



+ 120 gold (1983)



111 dark blue (1984)



121 blue (1982)



130 beige (1982)



339 ivory (1984)



Zweischicht-Metallic-Lackierung
+

+ 215 brownish grey (1984)



+ 233 blue (1984)



+ 329 dark red (1984)



+ 331 silver (1984)



+ 334 blue (1984)



+ 338 light blue (1984)



+ 032 wine-met. (1984)



+ 215 olive-met. (1983)



+ 218 brownish grey-met. (1983)



+ 224 orange-met. (1983)



+ 225 reddish beige-met. (1983)



+ 226 yellowish beige-met.
(1983)



+ 324 brown-met. (1984)



+ 228 dark green-met. (1983)



+ 235 green-met. (1983)



+ 930 red-met./H (1983)
Nuancen:/D - 1980 Blatt 33



+ Zweischicht-Metallic-Lackierung

041 red (1983)



042 light gold pearl (1983)



133 blu vanette (1983)



164 yellow (1983)



+ 011 dark wine-met./H (1983)
Nuancen: 011/D - 1981 - Blatt 34



+ 109 grey blue-met./H (1983)
Nuancen: 109/GR - 1982 - Blatt 36
109/BL - 1983 - Blatt 36



Zweischicht-Metallic-Lackierung
Für weitgehend effektegleiche Reparatur-
lackierungen steht das Standox Spezial-
Metallic-System zur Verfügung.

+

+ 229 light turquoise-met. (1983)



+ 210 brownish silver-met.
(1984)



+ 219 red-met. (1984)



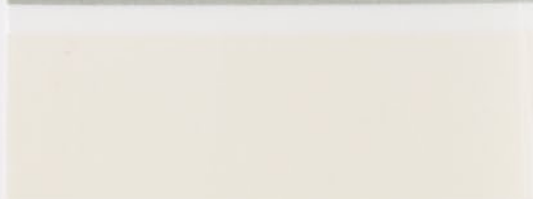
+ 232 blue-met. (1984)



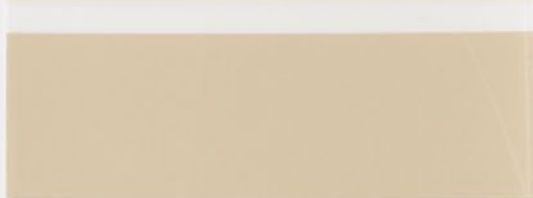
+ 104 green-met./GR (1982)



805 nissan white/GE (1983)



928 beige/GR (1983)



+ 029 pinkish beige-met./R (1983)

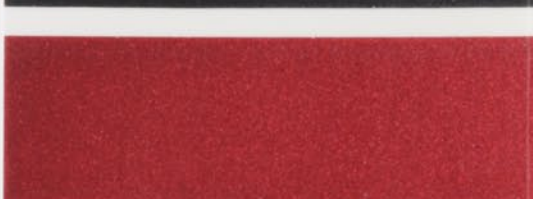


+ Zweischicht-Metallic-Lackierung

+ 082 grey-met. (1983)

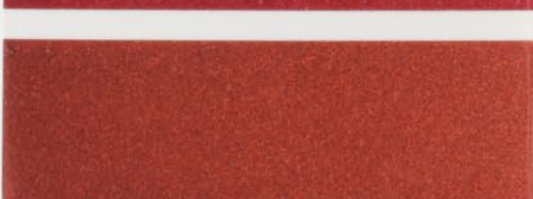


+ 118 red-met. (1983)



+

+ 670 bronze-met./D (1983)



+ Zweischicht-Metallic-Lackierung

+ 603 red met./GE (1980)



+ 842 brown-met./GR (1981)



+ 017 sage green-met. (1982)



+ 104 light green-met./GN (1982)



+ 106 light blue-met. (1982)



+ 109 grey blue-met./GR (1982)



+

+ 109 grey blue-met./BL (1983)



+ 810 brown-met./D (1982)



+ 818 green-met./GR (1982)



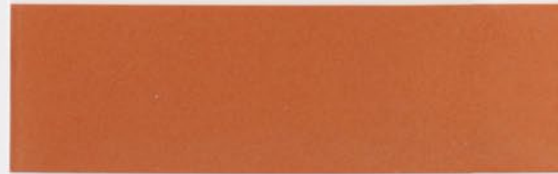
+ 010 beige met./D (1983)



+ 027 dark grey-met. (1981)



+ 027 orange-met. (1976)



+ 124 dark blue-met. (1980)



+ 029 pinkish beige-met./GR
(1981)



+ Zweischicht-Metallic-Lackierung

+ 034 greyish green-met. (1981)



+ 003 dark blue-met. (1982)



+ 006 silver-met. (1982)



+ 021 dark green-met. (1982)



+ 101 sand-met. (1982)



+ 102 brown-met. (1982)



+ 827 brown-met. (1981)



+ 842 brown-met./D (1981)



+ 931 dark red-met. (1981)



+ 932 silver blue-met. (1981)



+ 010 beige-met./H (1981)



+ 011 dark wine-met./D (1981)



+ Zweischicht-Metallic-Lackierung

+ 014 orange-met. (1981)



+ 015 dark brown-met. (1980)



+ 023 blue-met. (1981)



+ 028 grey-met. (1981)



Zweischicht-Metallic-Lackierung

+ 676 dark blue-met. (1979)



+ 806 blue-met. (1980)



+ 816 green-met. (1980)



+ 817 brown-met. (1980)



+ 819 dark red-met. (1980)



+ 924 blue-met. (1980)



+

+ 926 red-met. (1980)



+ 930 red-met./D (1980)



+ 204 dark brown-met. (1981)



+ 214 brown-met./H (1981)



+ 811 light brown-met./H (1980)



+ 815 blue-met./GR (1980)



+ 818 green-met./GN (1980)



+ 841 silver blue-met./H (1980)



+ Zweischicht-Metallic-Lackierung

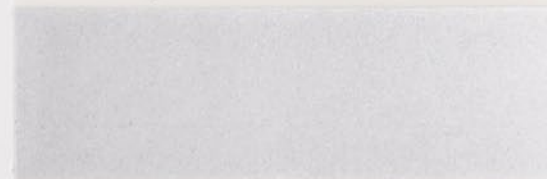
+ 167 shine blue-met. (1978)



+ 180 silver-met. (1978)



+ 619 silver-met. (1979)



+ 629 copper-met. (1979)



+ 672 silver jade-met. (1979)



+ 674 formal brown-met. (1979)



	+ 715 blue-met./D (1979)	
	+ 716 light green-met. (1979)	
	+ 718 bronze-met. (1979)	
	+ 719 light green-met./GE (1979)	
+ Zweischicht-Metallic-Lackierung	+ 720 silver-met./D (1979)	
	+ 828 blue-met. (1979)	
	+ 936 brown-met. (1979)	
	+ 603 red-met./H (1980)	
	+ 677 green-met. (1980)	
	+ 810 brown-met. (1980)	

+ Zweischicht-Metallic-Lackierung

+ 638 black pearl-met. (1979)



+ 649 silver-met. (1979)



+ 653 beige-met. (1979)



+ 663 silver-met./D (1979)



666 light grey-met. (1979)



+ 669 light green-met. (1979)



+ 670 bronze-met./H (1979)



+ 671 turquoise-met. (1979)



+ 690 gold-met./GE (1979)



+ 712 grey-met. (1979)



156 light grey-met. (1979)



161 dark grey-met. (1979)



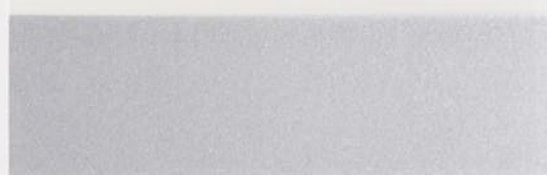
169 lavender-met. (1979)



+ 257 brown-met. (1979)



306 silver-met. (1979)



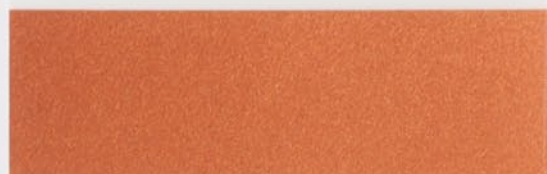
474 copper-met. (1979)



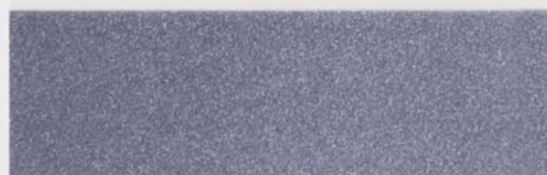
611 mahogany-met. (1979)



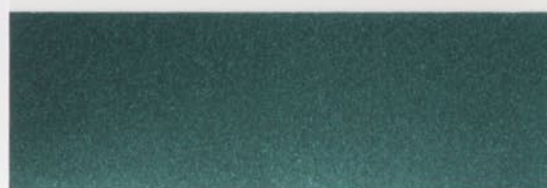
+ 620 copper-met. (1979)



+ 621 grey-met. (1979)



+ 631 dark green-met. (1979)



+ Zweischicht-Metallic-Lackierung

- + 561 turquoise-met. (1979)
- + 606 black-met. (1979)
- + 609 brown-met. (1979)
- + 615 green-met. (1979)
- + 236 brown-met. (1978)
- + 272 dark brown-met. (1978)
- + 365 light blue-met. (1978)
- + 510 light blue-met. (1978)
- + 519 beige brown-met. (1978)
- 127 crystal grey-met. (1979)

Zweischicht-Metallic-Lackierung



- + 201 grape-met. (1979)
- + 241 blue-met. (1979)
- + 242 light green-met. (1979)
- + 243 mid green-met. (1979)
- + 271 beige-met. (1979)
- + 303 green-met. (1979)
- + 309 wine-met. (1979)
- + 361 blue-met. (1979)
- + 364 blue-met. (1979)
- + 515 blue-met./H (1979)

+ Zweischicht-Metallic-Lackierung



+ Zweischicht-Metallic-Lackierung

- 364 blue-met. (1977)
- + 012 silver-met. (1977)
- + 237 red-met. (1978)
- + 305 light blue-met./D (1978)
- + 517 gold-met./H (1978)
- + 601 green-met. (1978)
- + 675 red-met. (1978)
- + 174 green-met. (1979)
- + 117 silver-met. (1979)
- 135 yellow green-met. (1979)



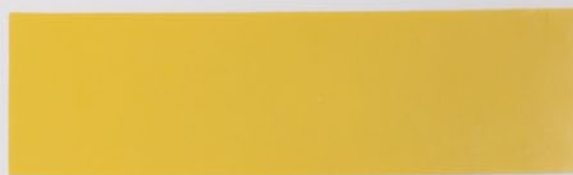
002 white (1981)



013 red (1981)



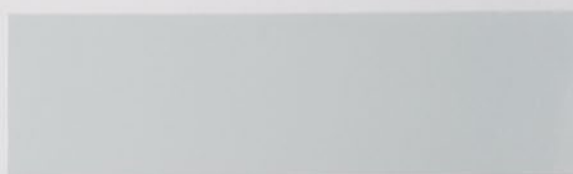
016 yellow (1981)



031 beige (1981)



922 grey bluish white (1981)



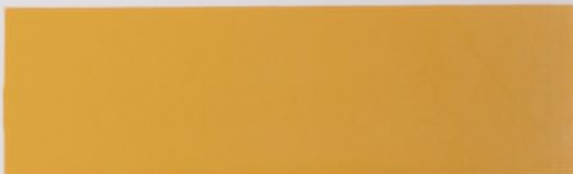
934 blue (1981)



119 yellow (1982)



129 orange (1982)



131 beige (1982)



132 blue (1982)



809 light blue (1979)



824 brown (1979)



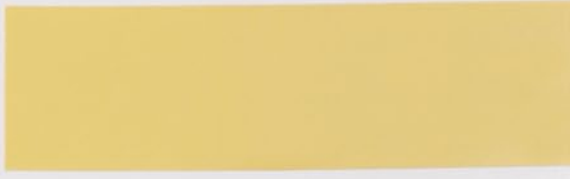
037 yellow (1980)



688 blue (1980)



804 yellow (1980)



921 brown (1980)



928 beige/R (1980)



929 white (1980)



933 dark grey (1980)



721 dark brown (1978)



461 light blue (1977)



419 orange (1978)



433 yellow (1978)



532 beige (1978)



573 dark blue (1978)



684 green (1978)



685 cream (1978)



829 orange (1978)



535 brown seasand (1979)



642 blue (1979)



919 yellow (1979)



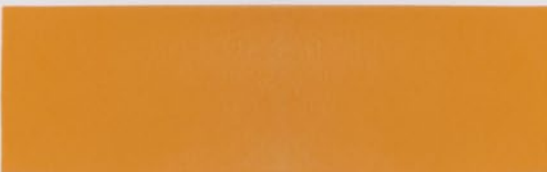
650 yellow (1980)



680 blue (1980)



806 orange (1980)



808 dark red (1980)



259 green (1977)



406 green (1977)



431 yellow (1977)



507 beige (1979)



563 sky blue (1979)



564 blue (1979)



612 green (1979)



803 leaf (1979)



805/1 dark grey (1979)



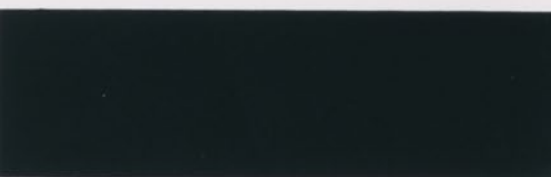
805 nissan white/H (1979)



807 red/D (1979)



907 green (1979)



206 ivory (1979)



647 brown (1979)



648 olive (1979)



661 light green (1979)



105 olive (1979)



107 turquoise (1979)



108 white (1979)



112 yellow (1979)



218 beige (1979)



222 light blue (1979)



255 turquoise (1979)



208 yellow (1978)



230 green (1978)



411 yellow/D (1978)



618 yellow (1978)



635 green (1978)



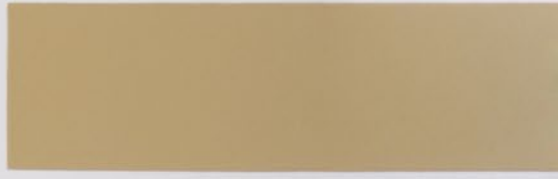
678 blue (1978)



617 beige (1979)



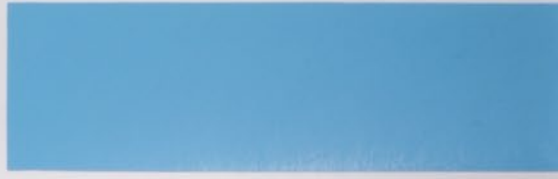
630 beige (1979)



643 light blue (1979)



646 blue (1979)



225 turquoise (1974)



227 red (1974)



247 blue (1974)



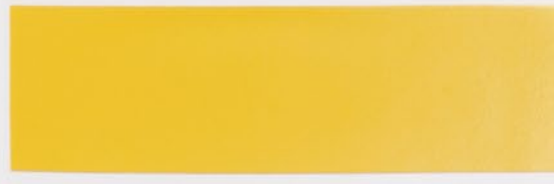
352 blue (1974)



353 yellow/H (1975)



411 yellow/H (1976)



412 dark green (1976)



518 dark blue (1976)



668 beige (1976)



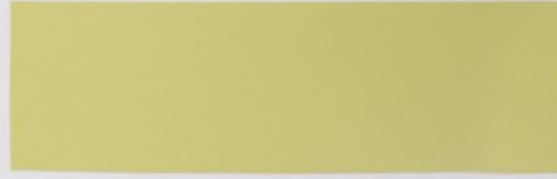
248 maroon (1977)



178 blue (1973)



179 yellow (1973)



216 white (1973)



217 yellow (1973)



224 yellow (1973)



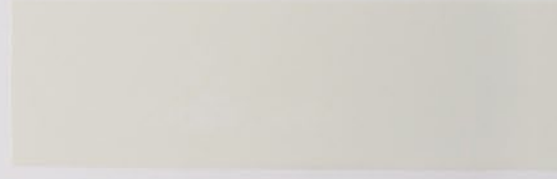
226 blue (1973)



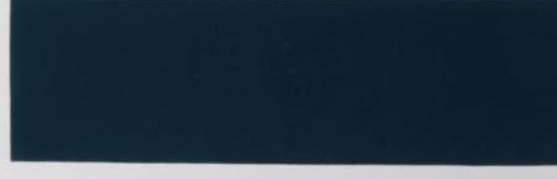
252 blue (1973)



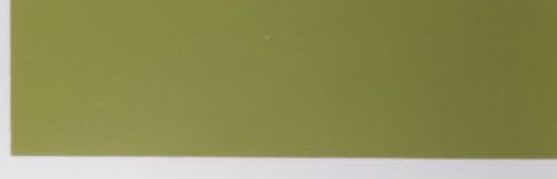
984 white (1973)



219 blue green (1974)



221 green (1974)



963 white (1972)



965 dark green (1972)



967 red (1972)



102 yellow (1973)



104 beige (1973)



110 red (1973)



125 beige (1973)



126 blue (1973)



163 red (1973)



176 olive (1973)



019 yellow (1972)



020 yellow (1972)



021 green (1972)



022 orange (1972)



529 beige (1972)



570 blue (1972)



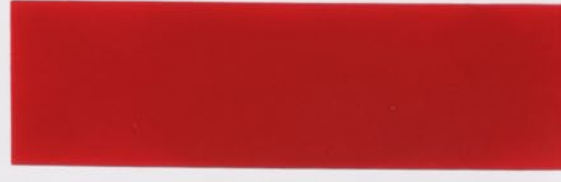
905 red (1972)



918 red (1972)



932 red (1972)



940 green (1972)



931 brown (1971)



938 yellow (1971)



939 olive (1971)



945 yellow green (1971)



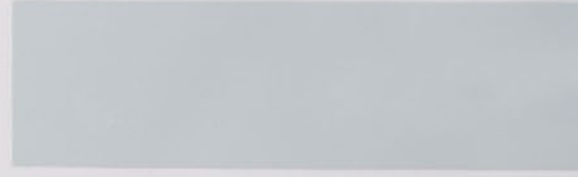
946 blue (1971)



964 light yellow (1971)



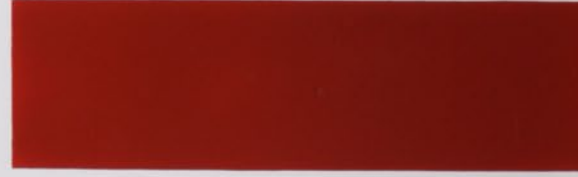
966 grey (1971)



003 green (1972)



006 orange (1972)



018 white (1972)



821 white (1969)



910 yellow (1969)



911 green (1969)



820 red (1970)



831 off white (1970)



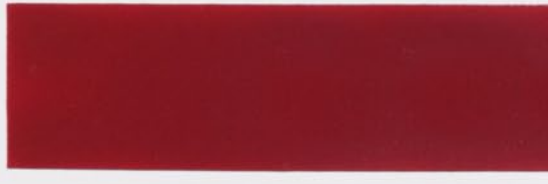
930 green (1970)



123 green (1971)



640 red (1971)



830 red (1971)



906 brown (1971)



1986

521 maroon (1968)



562 light blue (1968)



665 yellow (1968)



703 green (1968)



818 green (1968)



530 dark grey (1969)



637 white (1969)



644 brown (1969)



664 red (1969)



817 yellow (1969)



502 white (1967)



522 dark red (1967)



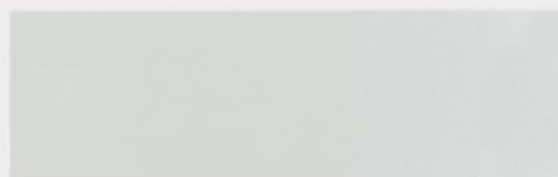
525 red (1967)



546 dragon green (1967)



554 light green (1967)



567 blue (1967)



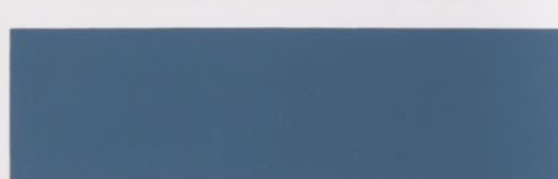
645 blue (1967)



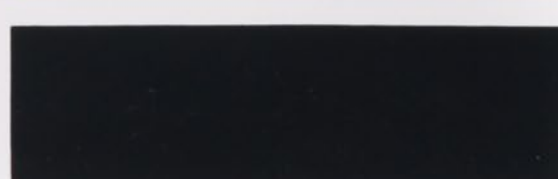
655 white (1967)



660 blue (1967)



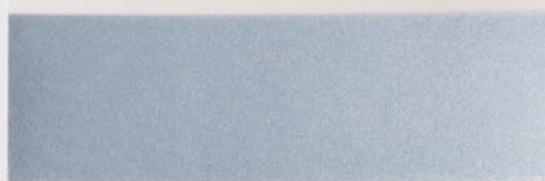
dark blue (1968)



+ 155 light green-met. (1974)



+ 356 blue-met. (1974)



+ 357 gold-met. (1975)



+ 301 brown-met. (1976)



+ 302 green -met. (1976)



+ 513 gold-met./GR (1976)



+ Zweischicht-Metallic-Lackierung

+ 514 green -met. (1976)



+ 240 green -met. (1977)



+ 307 blue-met. (1977)



324 brown-met. (1977)



944 olive met. (1972)



970 blue-met. (1972)



+ 026 gold-met. (1973)



+ 121 turquoise-met. (1973)



+ 136 green-met. (1973)



+ 137 turquoise-met. (1973)



Zweischicht-Metallic-Lackierung
+

+ 141 green-met. (1973)



+ 159 gold-met. (1973)



+ 265 blue-met. (1973)



+ 267 brown-met. (1973)



608 beige-met. (1969)



709 green-met. (1971)



711 light blue-met. (1971)



113 green-met. (1972)



115 blue-met. (1972)



129 light blue-met. (1972)



+ Zweischicht-Metallic-Lackierung

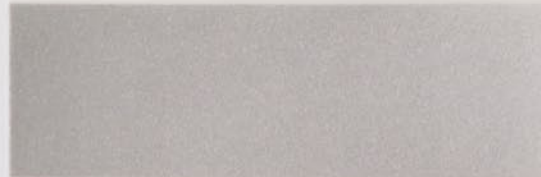
+ 258 silver-met. (1972)



+ 260 blue-met. (1972)



+ 263 silver-met. (1972)



708 beige-met./D (1972)





Standex GmbH · Postfach · D-42271 Wuppertal · Deutschland